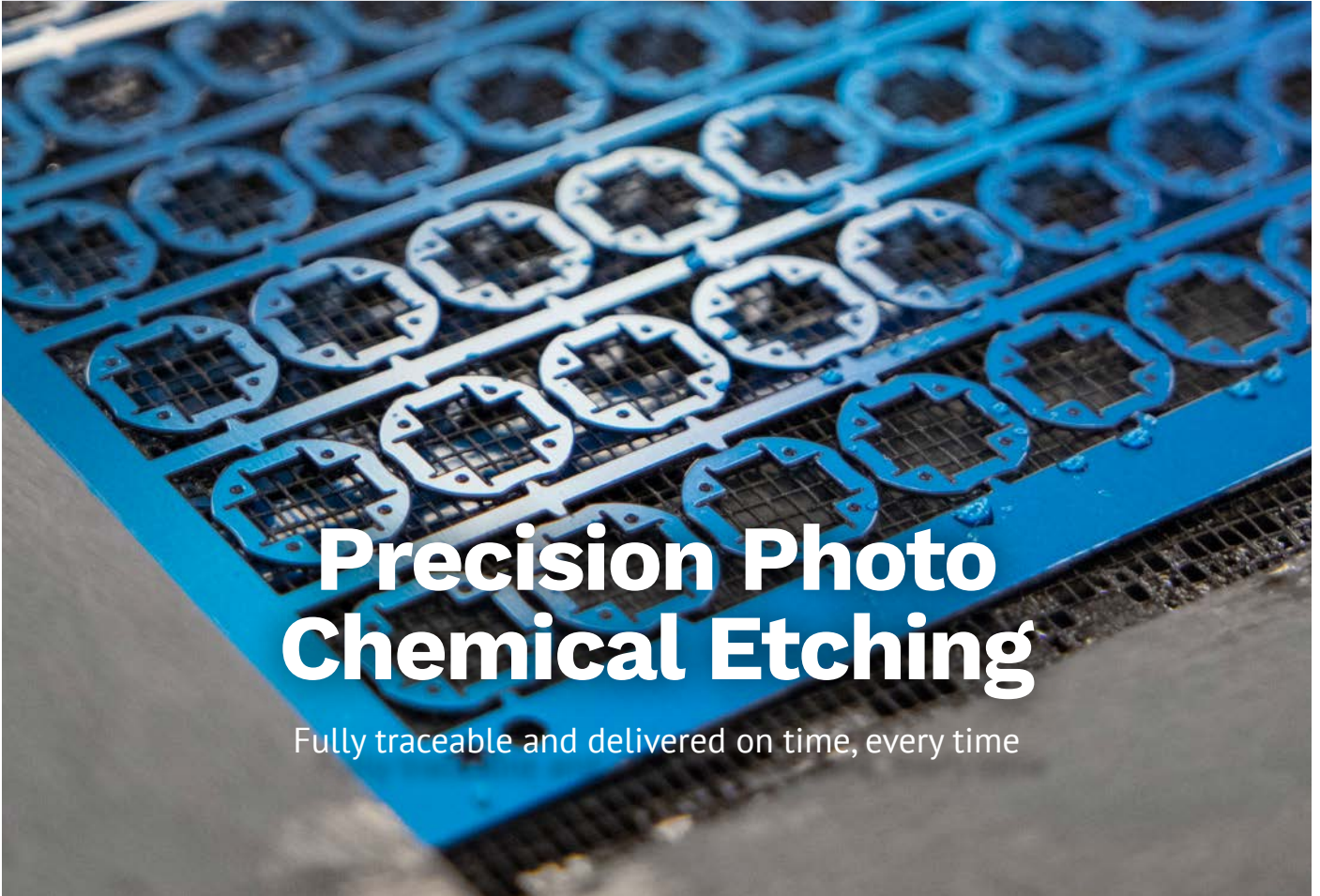


# C19 Medical Support

Manufacturing parts to support the supply of essential medical devices.



## Precision Photo Chemical Etching

Fully traceable and delivered on time, every time

# World class chemical etching

Your industry is evolving at a phenomenal rate during this crisis. Photofab are here to help and support your device production, we are fully set up to provide precise and rapid manufacturing for components in your medical devices including ventilators.

We are highly experienced and are already working alongside a number of key supply networks, and we have increased our capacity to allow us to help even more.

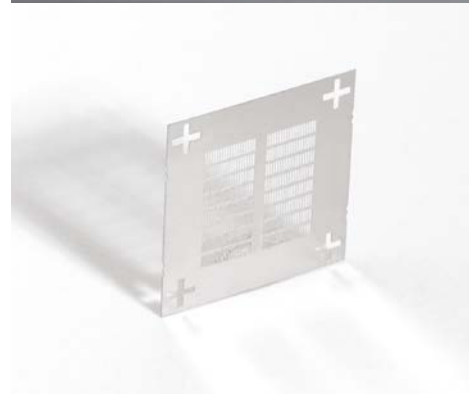
We manufacture fully traceable, high quality components and have full process control and trusted logistics partners that allow us to deliver on time, every time.

Photofab also offer the highest levels of customer service, with a dedicated account manager to help, support and manage your project throughout the entire process.



*“Customer service is at the heart of everything we do. We have invested in our people, machinery and processes to ensure we provide a world class customer service.”*

**Neil Shorten**  
Managing Director





# The all important facts



### Customer service

Single point account managers



### Precision

Tight tolerances and fine apertures



### Accredited

ISO9001, ISO14001, OHSAS 18001 & SC21



### Reliability

Committed to achieving 98.5% OTD



### Traceability

Full supply & manufacture visibility

Photofab have invested heavily in the future in both equipment and staff. Increased capacity provides reduced lead times for customers and improved technology produces high and more consistent quality. The company also invests strongly in its employees having adopted the Investors in People standard, recognizing that high quality service and productivity come from well trained and motivated personnel.



# Products & Services

Established in 1971, Photofab have become world-leaders in delivering bespoke components, as flat, formed, or fully-assembled, our dedicated account managers mean all quotes are turned around within 24 hours, and our rapid product turnaround and delivery ensures customer satisfaction.



Chemical Etching & Milling



Plating



Formed & Flats Springs



Contacts & Connectors



Filters, Meshes,  
Screens & Grids



Formed Components



Shims & Spacers



Encoder Discs & Actuators



Laser Cutting



Stamping



Gaskets & Seals



Masks and Stencils



Forming & Tool room



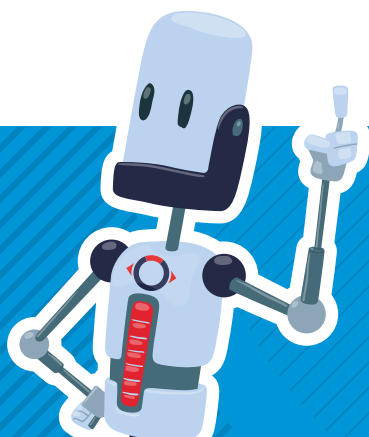
RFI Shielding Products



Metal Fuel Cell Plates



Metal Laminations



Photofabrication Ltd, 14 Cromwell Road, St Neots, Cambs, PE19 2HP United Kingdom

T . +44 (0)1480 226699

F . +44 (0)1480 475801

E . sales@photofab.co.uk

W . photofab.co.uk

