



MEDICAL CASE STUDY



Photofab's etching experience is just what Vision Engineering needs





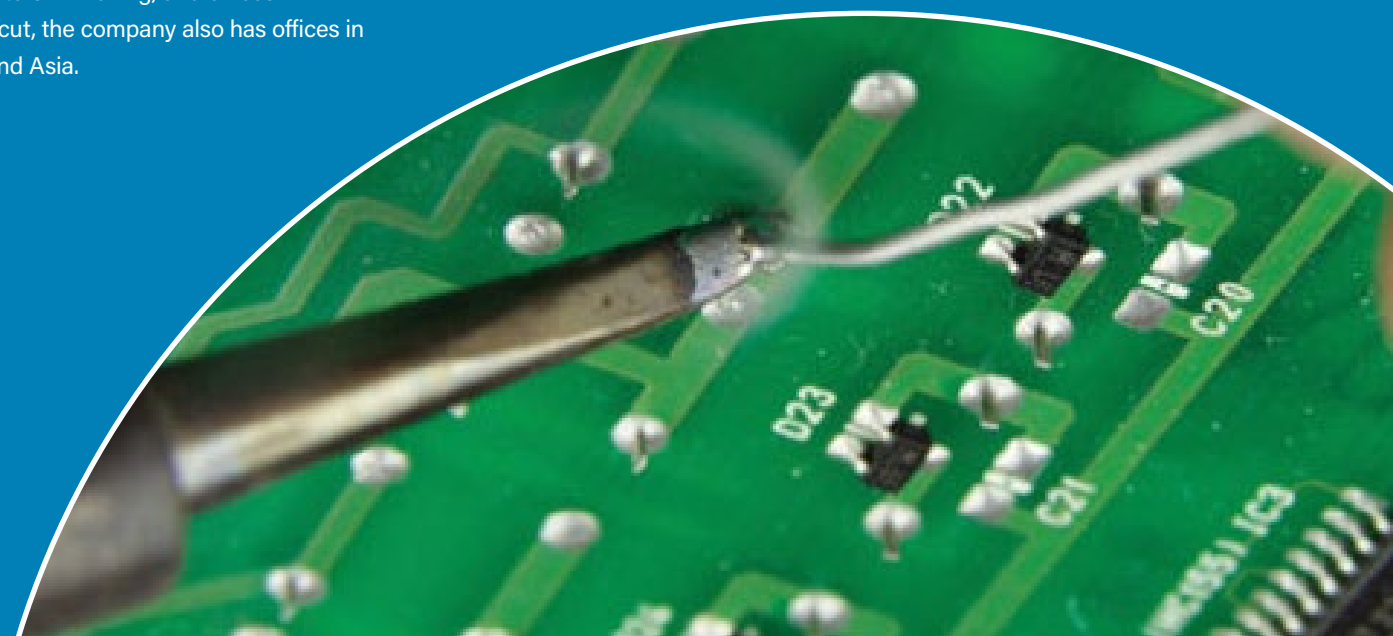
Introduction

Vision Engineering was created in 1958 by Rob Freeman, a toolmaker with the Jaguar racing team in a shed the company's global headquarters proudly sits next to the site where it all began. Rob's drive and appetite to create innovative products put the company on its road to success and Vision Engineering holds many world patents for optical technology.

One of their products, Mantis, is the world's first eyepiece-less stereo microscope, and was launched almost 30 years ago. Mantis has evolved significantly since its original design and Vision Engineering is currently manufacturing the fourth generation Mantis.

The product is used across the world in electronics, medical devices, packaging, automotive, and aerospace industries and for any application requiring inspection and rework.

In 1994, Mantis manufacturing moved to Connecticut, USA, where it is still manufactured today. Alongside its headquarters in Woking, and offices in Connecticut, the company also has offices in Europe and Asia.



Brief

The company attributes its success to innovation and development of new technology to improve quality in manufacturing, by inspection and measurement.

In order to maintain this, Vision Engineering needs precise components made to exact accurate measurements from a company that can turn an idea into a product quickly and without fuss. This is where Photofab comes into the process, providing accurate parts without the significant waiting period.

“Significant R&D investment in optical and digital technology continues with recent patented technological breakthroughs heralding the next step in innovation and market penetration for Vision Engineering.”

Mark Curtis

Managing Director, Vision Engineering



Solution

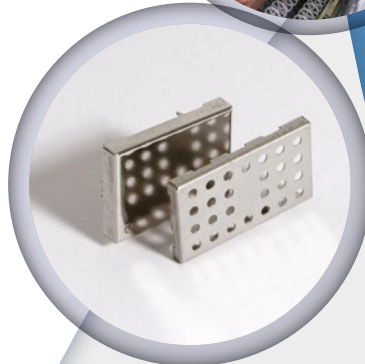
Vision Engineering likes to use Photofab because their idea, even in a basic hand-scribbled format, will be created exactly how they need it with minimum fuss and a very swift turnaround. Because Photofab has employees with a basic understanding of what the customer is doing with the parts, or what they are trying to achieve, advice can be offered, and potential alternatives to any issues on a case-by-case basis.

Due to the nature of the Vision Engineering processes, they require very accurate measurements, which is only possible using Photofab's process of etching. Photofab has a long trading history with Vision Engineering and a great working relationship where both companies understand exactly what the other needs to make things work.

Result

Vision Engineering has, at times, needed a quick turnaround, which Photofab has satisfied within three days of the order being made. Etching was found to be the better solution for Vision Engineering's requirements when compared to laser cutting, which often leaves burrs that need further processing.

Photofab can now offer Vision Engineering a tighter overall tolerance and a better lead time than laser cutting, where two to four weeks is considered to be standard waiting time.



"We are proud to be associated with world market leaders like Vision Engineering. They appreciate we have an excellent workforce, a wealth of knowledge and experience gained over more than 50 years that comes up with the solutions Vision Engineering needs. Our relationship is forged on trust – may it long continue."

Brett Robinson
Sales Account Manager, Photofab

Products & Services

We are world leaders in the development of photochemical technology to produce intricately shaped components. We have produced over 70,000 different components at the request of our clients over the years. When you work with us, this experience is at your disposal; at all stages of the chemical etching process, our engineers at Photofab will offer advice to improve the product and reduce the costs.

Our knowledge and experience allow us to control the etching speed and produce metal parts with both high accuracy and high quality. We carefully review the component usage to ensure that the correct metal has been selected both from a performance and cost perspective.

Products and Services

Metal Fuel Cell Plates

Forming & Tool room

Metal Laminations

RFI Shielding Products

Encoder Discs & Actuators

Masks and Stencils

Laser Cutting

Formed & Flat Springs

Contacts & Connectors

Shims & Spacers

Formed Components

Chemical Etching & Milling

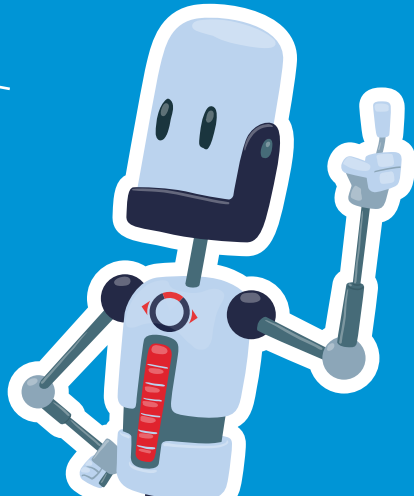
Stamping

Plating

Filters, Meshes, Screens & Grids

Gaskets & Seals





Photofabrication Ltd,
14 Cromwell Road, St Neots,
Cambs, PE19 2HP United Kingdom
T . +44 (0)1480 226699
F . +44 (0)1480 475801
E . sales@photofab.co.uk
W . photofab.co.uk

